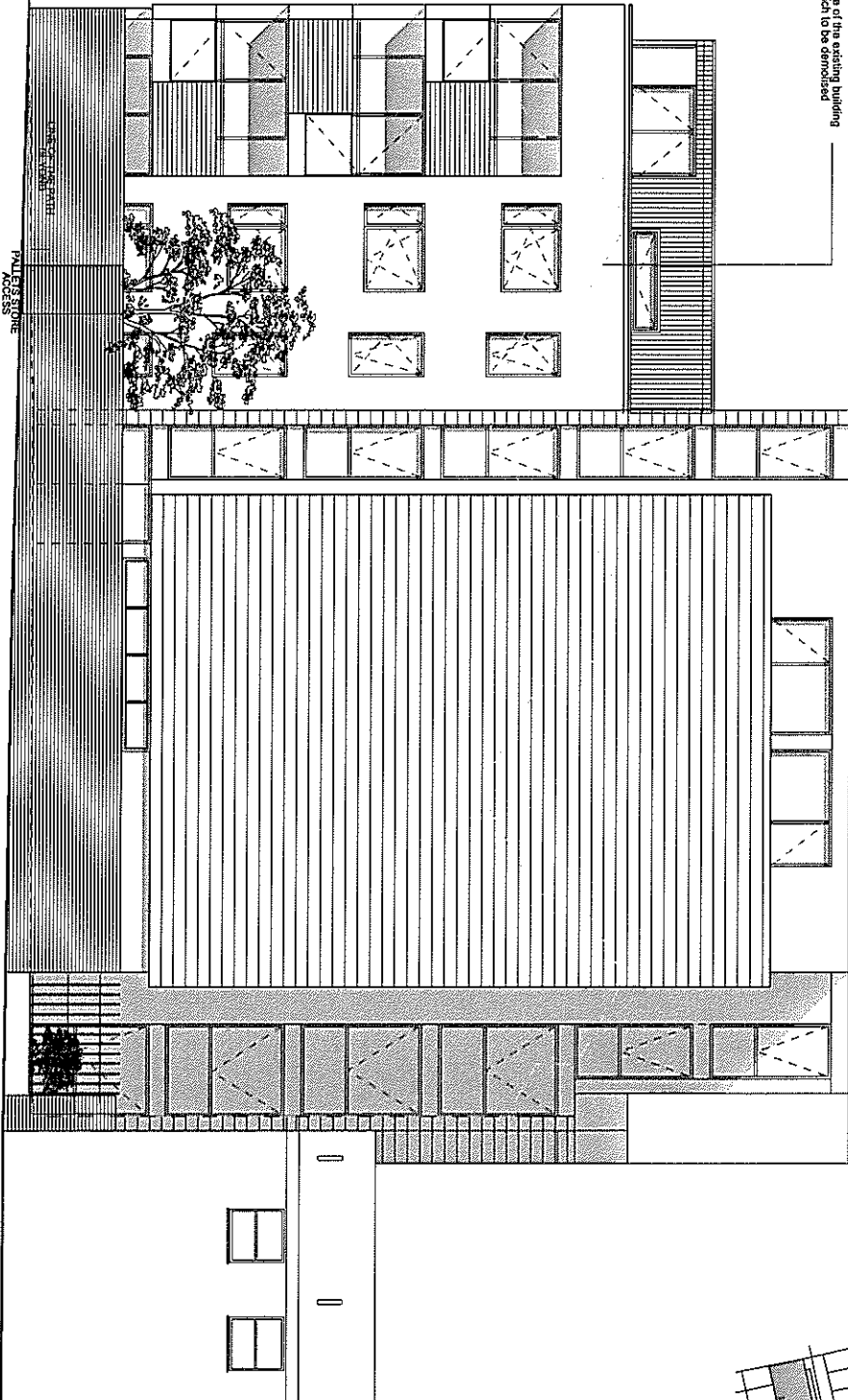
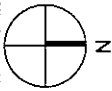
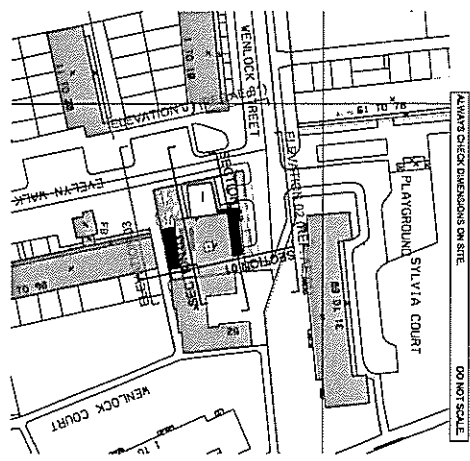
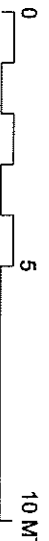


PROPOSED ELEVATION 03- SOUTH



Line of the existing building which is to be demolished

Line of the building beyond



REV. B 18.07.2008 - Revised to achieve 20% of renewable energy
 REV. A 21.05.2008 - REVISED TO PLANNERS COMMENTS

GML Architects
 40 Freshwater Street
 London EC1V 8RE
 Tel: 020 7490 4299
 Fax: 020 7490 4084
 info@gmlarchitects.co.uk

50 WENLOCK STREET
 HACKNEY
 LONDON, N1
 MARCH 2008
 1:100@A3

PROPOSED SOUTH ELEVATION	3245 / P3	B
* KEY PLAN		